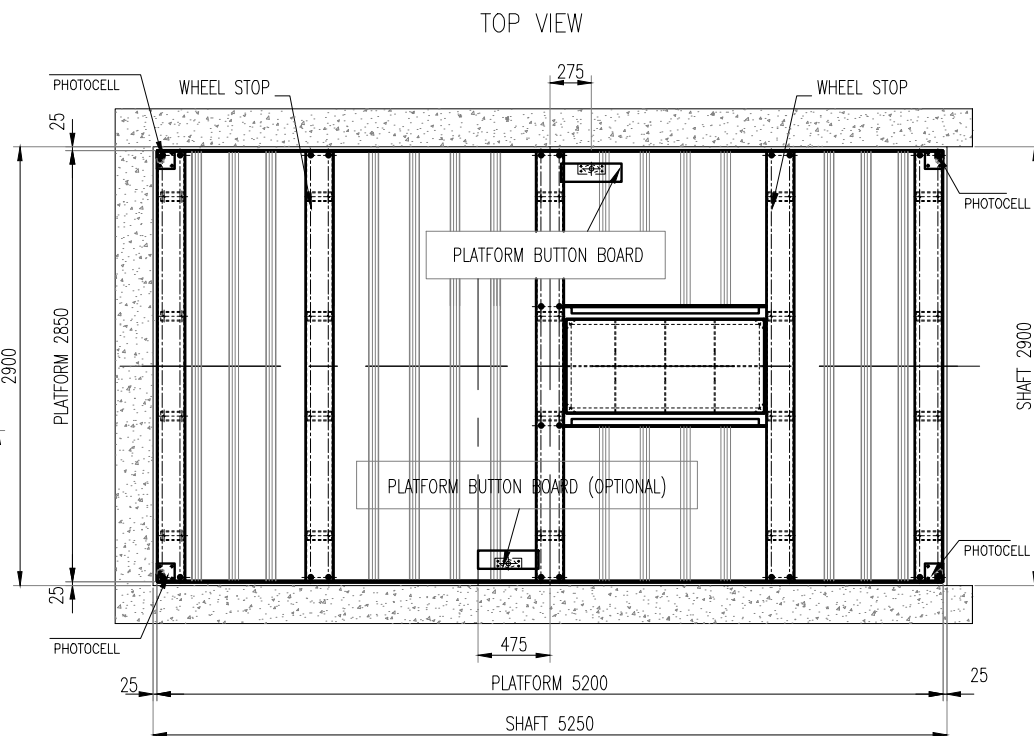


GENERAL LAYOUT



(*) PLEASE LET TAKE INTO ACCOUNT THAT
A CLEARANCE <25 mm HAS TO BE MANDATORY

PLEASE DEFINE POSITIONING OF:
- HYDRAULIC POWER UNIT
- PUSH BUTTON

THE CUSTOMER HAS TO TAKE CABLE CHANNELS
WITH DIAMETER Ø40 FOR THE CONNECTION
BETWEEN THE CONTROL UNIT AND THE
PUSH-BUTTON

HLS UNDERLINES THAT:
- THE LAYOUT IS VALID JUST FOR THE QUOTED DIMENSIONS
- THE OUT OF SCALE MEASURES ARE HIGHLIGHTED
- THE LAYOUT CANNOT BE USED TO EXTRACT
CONSTRUCTIVE DETAILS, EXCEPT WHERE SPECIFICALLY
HIGHLIGHTED

HLS DECLINES ANY RESPONSIBILITY FOR THE IMPROPER USE
OF THE DWG FILE

MAX CAPACITY			3000 Kg		
TRAVEL			(max 4100)		
STOPS			2		
CYLINDER ROD DIAMETER			ø80		
MAIN POWER			HYDRAULIC		
POWER SUPPLY			400V 3ph 50Hz		
MOTOR POWER			5.5 KW		
MIN RUNNING PRESSOURE			100 bar		
MAX RUNNING PRESSOURE			240 bar		
POWER SUPPLY			380V 3ph 50Hz		
NOMINAL CURRENT			11 A		
STARTING CURRENT			66 A		
MEAN SPEED			0.06 m/s		
COMMAND TYPE		ON PLATFORM	DEAD MAN		
		AT EACH FLOOR	DEAD MAN		
ELECTRIC LOCK TYPE			PIZZATO FG60AD5D0Z-V34 24 AC/DC ACTUATOR VFKEYF22		
MAGNETIC SENSOR TYPE			SCHMERSAL BNS 303-11z		
FLOOR	ENTRIES	DOORS	PUSH BUTTON	ELECTRIC LOCK	MAGNETIC SENSOR
1	1	1	1	*	*
2	1	1	1	*	*

(*) = TO BE DEFINED INTO ORDER

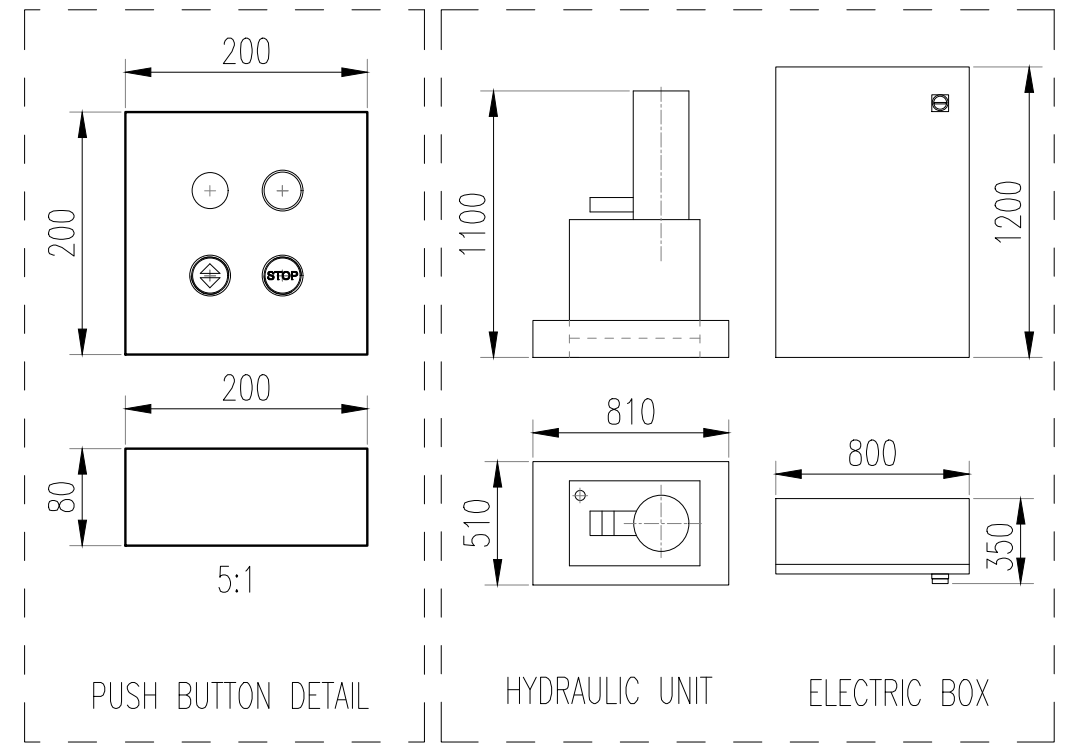
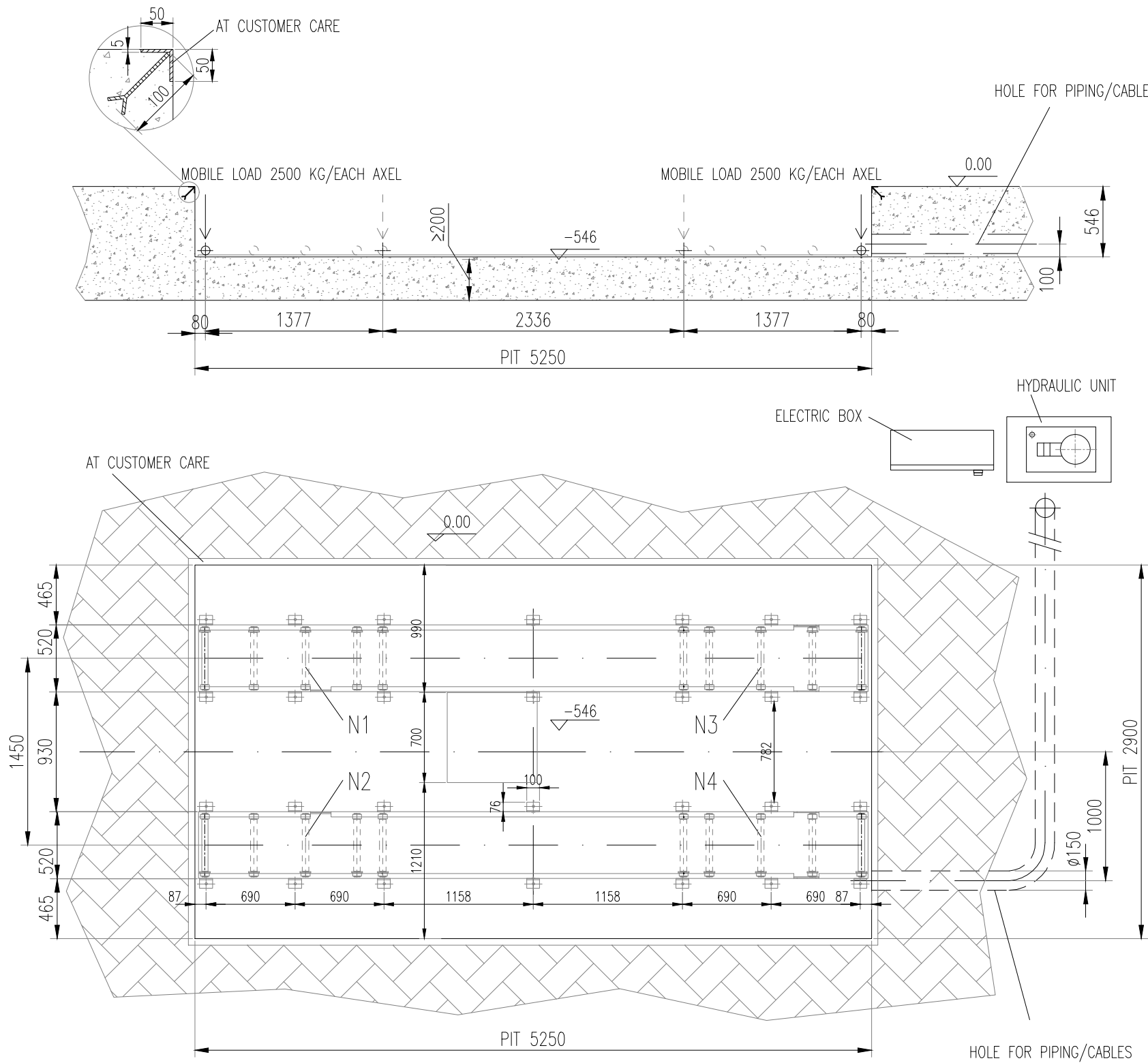
Dimensions without tolerance, according to UNI EN 22768-1, precision level	MEDIUM	Precision level	Dimension groups Linear tolerances in mm								Dimension angular group tolerances (Short side)				
			from 0,5 to +3	> 3 +6	>6 +30	>30 +120	>120 +400	>400 +1000	>1000 +2000	>2000 +4000	over 4000	up to 10	>10 to 50	>50 to 120	>120 to 400
		Medium	±0,1	±0,1	±0,2	±0,3	±0,5	±0,8	±1,2	±2	±3	±1°	±0°30'	±0°20'	±0°10'

REVISIONS:			COPYRIGHT		
			THIS DRAWING IS COPYRIGHT AND THE PROPERTY OF THE AUTHOR IT MUST NOT BE RETAINED, COPIED OR USED WITHOUT THE AUTHORITY OF THE AUTHOR.		
			DISCLAIMER		
			THIS DRAWING AND ITS CONTENTS ARE ELECTRONICALLY GENERATED, ARE CONFIDENTIAL AND MAY ONLY BE USED FOR THE PURPOSE FOR WHICH THEY WERE INTENDED. THE AUTHOR WILL NOT ACCEPT RESPONSIBILITY FOR ANY CONSEQUENCES ARISING FROM THE USE OF THE DRAWING FOR OTHER THAN ITS INTENDED PURPOSE OR WHERE THE DRAWING HAS BEEN ALTERED, AMENDED OR CHANGED EITHER MANUALLY OR ELECTRONICALLY BY ANY THIRD PARTY.		
			NOTE		
			THIS IS AN UNCONTROLLED DOCUMENT ISSUED FOR INFORMATION PURPOSES ONLY, UNLESS THE CHECKED SECTIONS ARE SIGNED OR COMPLETED. FIGURED DIMENSIONS TAKE PRECEDENCE OVER SCALED. DO NOT SCALE REDUCED SIZE DRAWINGS. VERIFY DIMENSIONS PRIOR TO COMMENCING ANY ON-SITE OR OFF-SITE WORKS OR FABRICATION. IF IN DOUBT - ASK.		
No.	REVISION DESCRIPTION	DRAWN	DATE		

HLS
Equipment



PROJECT TITLE		PROJECT LEADER: A.SHARPE		SIGNATURE:	
DESIGNER:		DRAFTSPERSON: MM		DATE:	
DRAWING TITLE		SCALE: NOT TO SCALE		SHEET SIZE: A3	
JOB No.:		DRAWING No.:		REVISION:	
-		01			



NOTE/NOTES

- N1, N2, N3, N4 = KG 2500
- DIMENSIONS mm-inch
- AN EXTRACTION WATER PIPING AND OR PLUNGER PUMP AN ADVISED

REVISIONS:			
No.	REVISION DESCRIPTION	DRAWN	DATE

COPYRIGHT
THIS DRAWING IS COPYRIGHT AND THE PROPERTY OF THE AUTHOR IT MUST NOT BE RETAINED, COPIED OR USED WITHOUT THE AUTHORITY OF THE AUTHOR.

DISCLAIMER
THIS DRAWING AND ITS CONTENTS ARE ELECTRONICALLY GENERATED, ARE CONFIDENTIAL AND MAY ONLY BE USED FOR THE PURPOSE FOR WHICH THEY WERE INTENDED. THE AUTHOR WILL NOT ACCEPT RESPONSIBILITY FOR ANY CONSEQUENCES ARISING FROM THE USE OF THE DRAWING FOR OTHER THAN ITS INTENDED PURPOSE OR WHERE THE DRAWING HAS BEEN ALTERED, AMENDED OR CHANGED EITHER MANUALLY OR ELECTRONICALLY BY ANY THIRD PARTY.

NOTE
THIS IS AN UNCONTROLLED DOCUMENT ISSUED FOR INFORMATION PURPOSES ONLY, UNLESS THE CHECKED SECTIONS ARE SIGNED OR COMPLETED. FIGURED DIMENSIONS TAKE PRECEDENCE OVER SCALED. DO NOT SCALE REDUCED SIZE DRAWINGS. VERIFY DIMENSIONS PRIOR TO COMMENCING ANY ON-SITE OR OFF-SITE WORKS OR FABRICATION. IF IN DOUBT - ASK.



PROJECT TITLE	
HLS - TR - 30 GOLD P	

PROJECT LEADER: A.SHARPE	SIGNATURE:
DESIGNER:	DATE:
DRAFTSPERSON: MM	SHEET SIZE: A3
SCALE: NOT TO SCALE	DRAWING No.: 02
JOB No.: -	REVISION: